

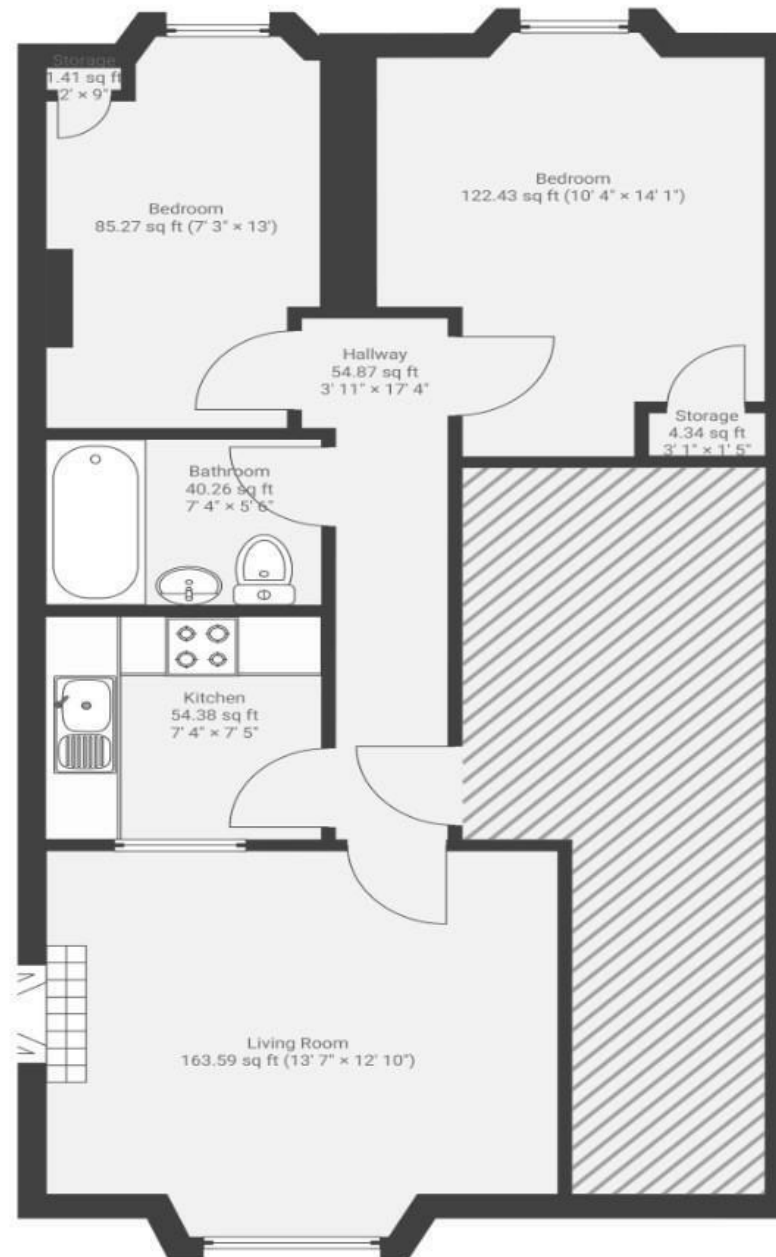
Park Place

CLIFTON

APPROXIMATE FLOOR AREA
55.0 SQM / 592 SQFT



GROUND FLOOR



Illustrations are for reference purposes only, measurements are approximate, not to scale.

Boardwalk

Park Place

CLIFTON, BRISTOL



£325,000



2 Bedrooms



BS8 1JP



1 Bathrooms

"Living on Park Place for the last 10 years has been really special. When I came to view I was struck by the high ceilings and arch window to the kitchen. Being able to walk up to Clifton Village or Park Street for a morning cup of coffee has been ideal, I hope that the incoming buyer enjoys it as much as I have."

